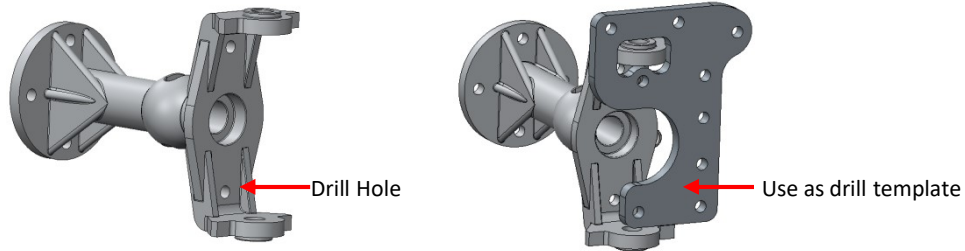
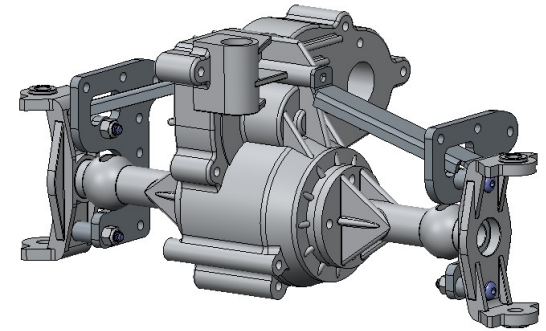


Clod Dual Shock Mount Instructions

Step 1:

- Drill 1/8" hole in plastic axle tube. The shock bracket can be used as a template to mark the lower hole.

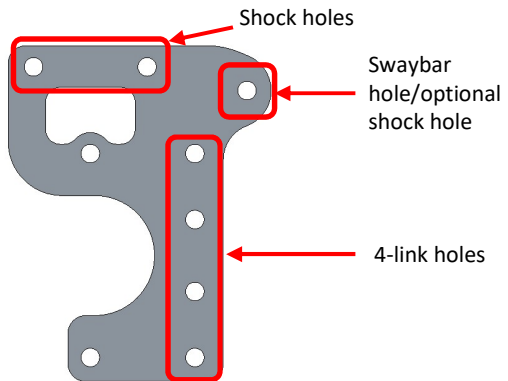
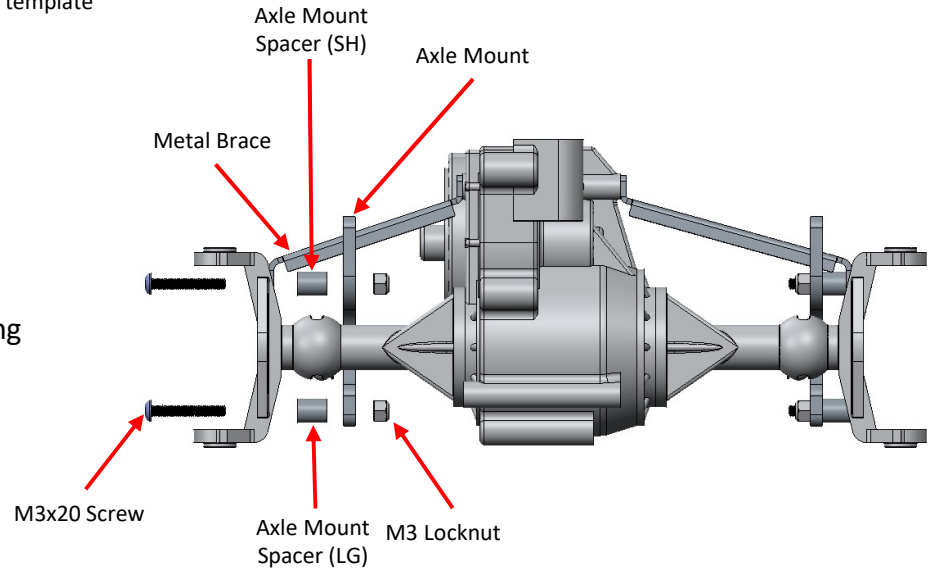


Step 2:

- Slide axle metal brace through shock bracket and screw metal brace to the main body of the axle case.

Step 3:

- Install short spacer on top by installing M3 screw and tightening with the provided locknut.
- Repeat for bottom hole using the long spacer.
- Complete all installations.



*Swaybar hole is not needed for stock Clod chassis. This hole is used on the KK2 or custom chassis setups. Custom chassis setups may use this hole as a shock mounting location.